

CPD Certificate in Histopathological Dissection (level 9)

Joint Programme of School of Biological and Health Sciences, Technological University Dublin,
the Faculty of Pathology, Royal College of Physicians of Ireland, in collaboration with the
Academy of Clinical Science and Laboratory Medicine

Information Leaflet

Module commencement - September

Two modules run each academic year – based on market demand

The modules will be dependent on the number of applicants and demand from the following:

CPD Certificate in Histopathological Dissection – *Skin*

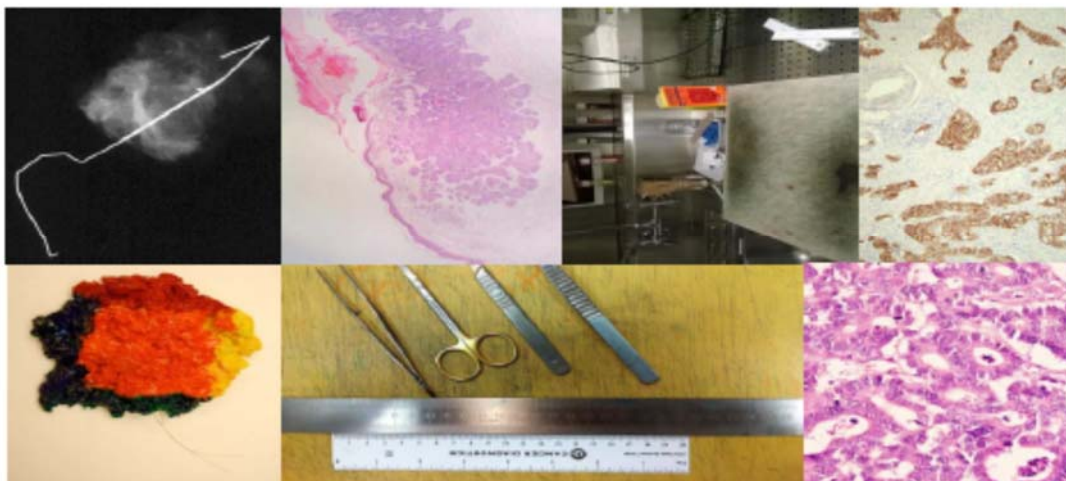
CPD Certificate in Histopathological Dissection – *Breast*

CPD Certificate in Histopathological Dissection – *GIT (under review)*

CPD Certificate in Histopathological Dissection - *Gynaecological with Perinatal*

CPD Certificate in Histopathological Dissection - *Gynaecological with Colposcopy*

CPD Certificate in Histopathological Dissection - *Gynaecological with Gynaecological Oncology*



Programme Overview

The programme is of 12-month duration.

Students will undertake a substantial programme of laboratory-based Histopathological Dissection training and completion of an evidence-based portfolio to document the learning and reflection of histopathological dissection practice, including a case study and additional assignments.

Each student undertaking a module is required to attend 2 on-site tuition days at the start of the programme. The first day delivered on-site in the Central Quad in Grangegorman TU Dublin and the second in a designated Histopathology Laboratory, depending on the module/elective (Cork and/or Dublin).

A third day is held on campus in TU Dublin mid-way through the academic year.

The specified number of specimens and specimen types for each module must be complete prior to final assessment.

On completion of all components in the evidence-based portfolio, students will undertake a final histopathological dissection assessment.

Applicants for the CPD Certificate in Histopathological Dissection must meet the Entry Requirements for the Programme as outlined below;

This programme is open to Medical Scientists, who are eligible for membership of the Academy of Clinical Science and Laboratory Medicine.

1. The applicant must be eligible to practice as a Medical Scientist in Ireland and be registered with CORU.
2. The applicant must have a **minimum of three years** post-qualification experience working fulltime as a Medical Scientist in a Histopathology Laboratory preferably accredited to ISO 15189 standard by the Irish National Accreditation Board (INAB).
3. The applicant must have a written agreement from a named Trainer Consultant Histopathologist (Specialist Area – *Skin, Breast, GI Tract, Gynaecological with Perinatal, Colposcopy or Gynaecological Oncology*), in the hospital in which they are employed, confirming support and facilities available for the duration of the histopathological dissection training and written agreement that they will supervise the necessary competency training in histopathological dissection of the specified tissue. If another Trainer Histopathologist is responsible for training in the elective specialist area for the gynaecological modules (perinatal, colposcopy or gynaecological oncology), the applicant must have written agreement from both Trainer Histopathologist/s.

Please note: It is national policy to concentrate complex multidisciplinary cancer care (Breast and G.I.Tract) in cancer centres. To assist in assuring quality of training, applications for the Breast and G.I.Tract modules will only be accepted from Medical Scientists working in a laboratory sited in one of the NCCP designated cancer centres.

Specimen requirements for Histopathological Dissection of specialist tissues

Histopathological Dissection for Breast must include the following specimen types:

Total number: 100 specimens

Mastectomies x 20 to include:

- 5 post neoadjuvant
- 5 DCIS without a mass lesion

Excisional biopsies x15 including fibroadenomas, radial scars, and papillomas

Duct excisions x 5

Wire guided wide local excisions x 20:

- 10 for masses
- 10 for calcifications

Sentinel lymph nodes x 5

Axillary clearances x 5

Breast reductions x5

Prophylactic mastectomies x 2

Histopathological Dissection for Skin must include the following specimen types:

Total number: 200 specimens

- Skin curettings x 5
- Shave biopsies x 10
- Incisional biopsies x 2
- Punch biopsies x 10
- Punch excisions x 5
- Unorientated ellipse excisions x 10
- Orientated excision specimens x 10
- Re-excisions x 10

Histopathological Dissection for G.I.Tract must include the following specimen types:

(Under review and will not be available before Sept 2024)

Total number: 100 specimens

- Polyps x 20
- Endoscopic mucosal resection x 3
- Gallbladder x 30
- Appendix x 30
- Colorectal carcinoma resection x 10 (to include a minimum of 5 rectal in Cancer Centre)
- Inflammatory/ischaemic (inflammatory bowel disease, diverticulitis etc.) x 10

Note: Dissection of Full and Partial Gastrectomies and Tumours of the Oesophagus are not included in this dissection module.

Histopathological Dissection for Gynaecological Modules must include the following specimen types:

Total number: 85 specimens

CORE 1: Min 30 specimens

- Benign and/or malignant uteri x 15
- Fallopian Tube / Ovary x 15

CORE 2: Min 20 specimens

- Indicative specimens: Polyps / Risk reducing salpingo-oophorectomy / Myomectomy / Vaginal / Vulval orientated excision

Electives: Students select one elective module in addition to the Core modules

Perinatal: Min 35 specimens

- Products of conception, to include with fetal tissue and with clinical/gross suspicion of molar pregnancy x 10
- Ectopic pregnancy x 2
- Singleton placenta x 15
- Twin placenta x5 - to include mixture of dichorionic and at least 1 x monochorionic and injection study (if available)

Colposcopy: Min 35 specimens

- Cervical excision specimens (LLETZ/LOOP/LEEP/CONE) x 30
- Cervical polyp and Endocervical polyp x 5

Oncology: Min 20 specimens

- Malignant uteri - endometrial carcinoma x 10
- Ovarian/fallopian tube malignancies x 10

For further information, please contact Alison Malkin at: alison.malkin@tudublin.ie.

Cost per module: €650¹

¹ Costs subject to annual review.